



A perfect match of natural aesthetics and functional concepts



MAJOR AF LINE

VENEERING SYSTEM





MAJOR AF LINE

The MAJOR AF LINE is a veneering system made of a line of composite multi-layer facings and teeth complemented with a range of light curing materials specifically designed to obtain life-like restorations on implant prosthesis.

The MAJOR AF LINE may be used for a wide range of dental treatments, both by the dentists in their own clinics and by technicians in the laboratories.

The multi-layered teeth and facings, in composite materials, have been developed to match natural aesthetics with functional concepts. They may be used in combination with the MAJOR AF line of cements, bonding agents, light curing composites and acrylic resin materials for characterization of aesthetic implant restorations.

The entire MAJOR AF line has been projected to grant an optimal materials compatibility while achieving excellent results thanks to the wide range of available shades.

The MAJOR AF line may be used in several different types of veneering and aesthetic restorations on implant prosthesis, such as:

- Aesthetic diagnostic try-ins
- Conical and telescope crowns
- Implant supported restorations
- Permanent and temporary crowns and bridges
- Occlusal Veneers
- Combined prosthesis
- Temporary and total prosthesis





TIME AND COST SAVINGS

The MAJOR AF LINE allows dentists the realization of implant prosthesis in a very easy and fast way, achieving greater time and cost savings using the composite veneers as temporary aesthetic try-ins. In this way, patients can immediately evaluate the final results of the permanent implant to be made in the laboratory at a later time, using the same selected facings.

OPTIMAL RESULTS WITH COMBINED PROSTHESIS

The use of the MAJOR AF LINE to make combined prosthesis together with the MAJOR PLUS COMP artificial teeth allows optimal results in terms of shades uniformity and occlusal functionality. The MAJOR PLUS COMP artificial teeth have been developed together with the veneer facings to obtain a range of shades and moulds which matches the MAJOR AF COMP LINE.

RESTORATIONS AND AESTHETICAL CHARACTERIZATIONS

The MAJOR AF light curing composites for stratifications and aesthetic restorations may be directly applied on the veneer facings using the MAJOR AF specific cements and bonding agents. These composites were developed to grant a stable and durable adhesion. The MAJOR AF light curing composites and acrylic resins allow the realization of an almost endless combination of characterizations achieving excellent aesthetic and functional results.

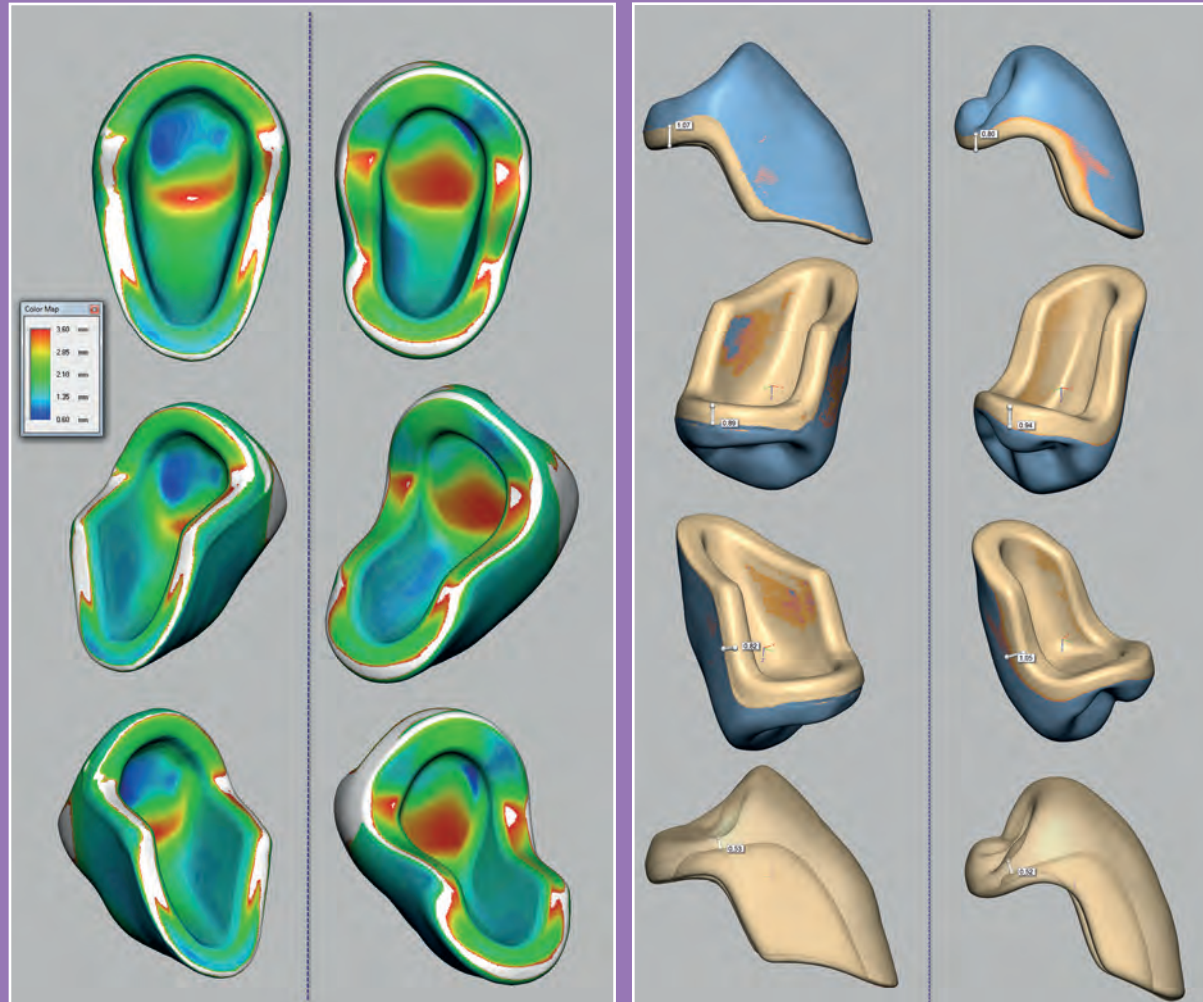
MAIN FEATURES

- Immediate visibility of the aesthetic result
- Adaptability to all types of prosthetic implants
- Can be used with composite or acrylic resins
- Wide range of aesthetic characterizations



MAJOR AF COMP VENEER FACINGS

Three-dimensional design of the morphology and stratification of the veneers.



MAJOR AF COMP VENEERING TEETH MAJOR PLUS COMP TEETH

The MAJOR AF COMP veneer facings and the MAJOR PLUS teeth are manufactured in Italy by MAJOR. One of the leading European dental companies, MAJOR has been manufacturing teeth in composite materials for over thirty years. The adoption of the most modern manufacturing techniques grants exceptional quality and reliability of the MAJOR AF COMP materials.

The MAJOR AF COMP veneer facings, as well as the MAJOR PLUS COMP teeth, allow any dental professional to greatly reduce the need of additional selective adjustments.

MORPHOLOGY

The wide range of anterior and posterior moulds allows an optimal use of the veneer facings, in combination with the MAJOR AF LINE products in any type of aesthetic restoration made by dentists or by dental technicians.

The MAJOR AF COMP veneer facings and the MAJOR PLUS posterior teeth are available in a range of ANATOMICAL, TECHNICAL and WFA (WIDE FUNCTIONAL AREA) moulds.

High ANATOMIC moulds present an accentuated cuspidal inclination (between 25° and 31°).

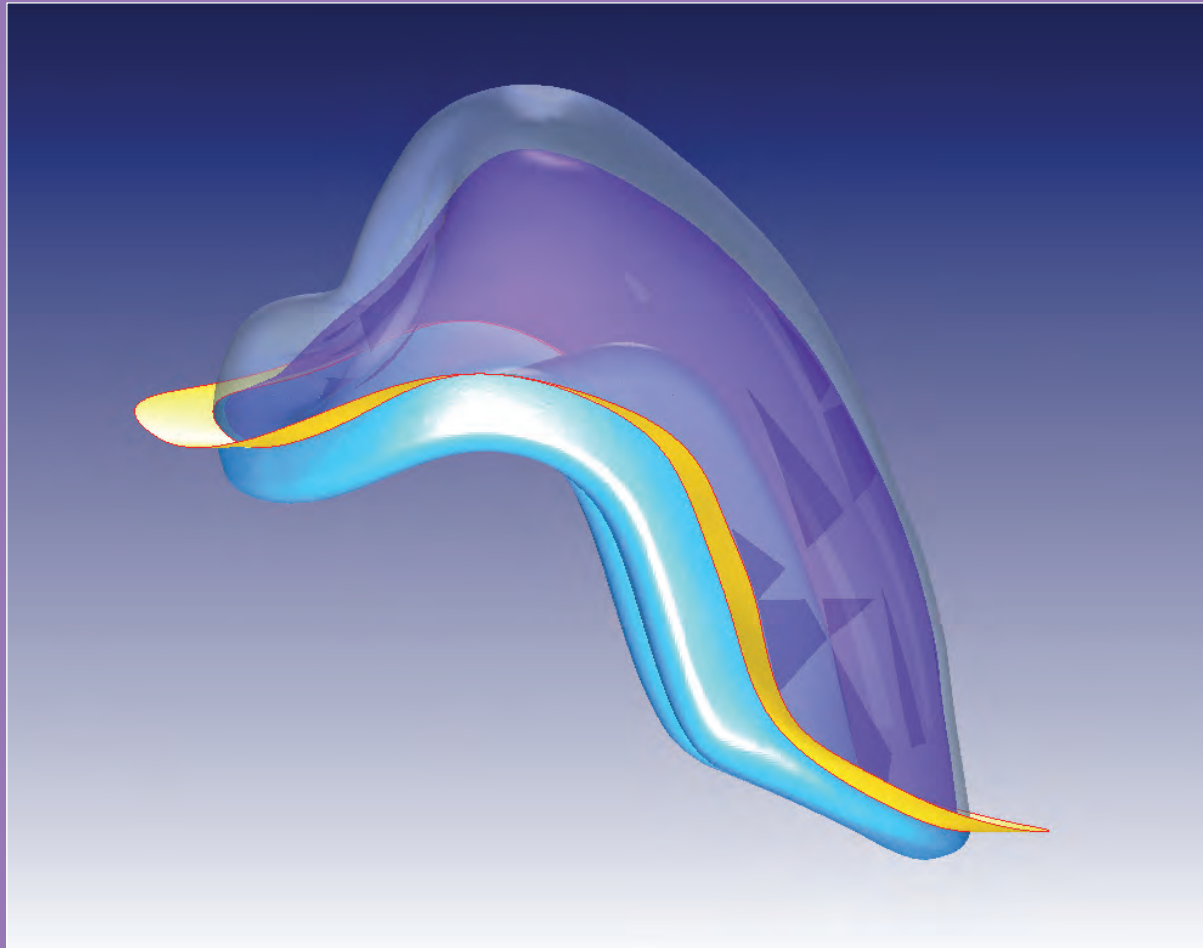
The specific morphology of anatomic moulds grants permanent occlusal contacts with a consequent decrease of lateral thrust and an increased prosthesis stability. The natural appearance of the tooth, characterized by deep sulcuses, enables better mastication and gives the prosthesis a higher mimetic value.

TECHNICAL moulds are designed with a balanced occlusal plane following specific geometrical rules. The tooth has a cuspidation with a geometrical inclination superior to 20° and flat sliding planes. This kind of design assures an easy and functional articulation.

The WFA moulds have been developed in cooperation with Prof. Giulio Preti and the prosthodontic department of the dental school of Turin University. The term WFA (Wide Functional Area) indicates the type of occlusion done during the mastication, where multiple points of contact are achieved due to a large functional area of around 2 mm. This wide fossa allows a large spectrum of occlusal contacts without interferences.

MAJOR AF COMP VENEER FACINGS

Stratification with composite enamel and inner layers in acrylic resin.



MAJOR AF COMP VENEERING TEETH MAJOR PLUS COMP TEETH

MATERIALS AND STRATIFICATIONS

The MAJOR AF COMP veneer facings and the MAJOR PLUS COMP teeth are made with a multilayer technique. The realization of the outer layer with a high quality composite material grants an optimal resistance to abrasion. In this way patients are provided with a high protection of the prosthesis during chewing and greater dimensional stability.

The inner layers are made of acrylic resin to ensure a perfect adhesion with the other materials through the use of appropriate bonding agents.

MAIN FEATURES

- Greater abrasion resistance and durability than acrylic resin teeth•
- Lower costs than with porcelain teeth
- Improved compatibility with opposing teeth (compared with porcelain teeth)
- Implant superstructures





MAJOR AF LINE COMPONENTS

ARTIFICIAL TEETH AND COMPOSITE VENEER FACINGS

Major AF Comp Veneering Teeth

Veneer facings in composite material for aesthetic restorations of frontal elements and vestibular/occlusal veneerings.

Moulds: the veneer facings are available in 10 upper anterior and 4 lower anterior moulds. Posterior elements are available in 6 different Technical, Anatomical and WFA moulds.

Shades: A1/D4

Codes: T6111 (Anteriors) / T6112 (Posteriors).

Major PLUS / Major PLUS COMP Teeth

Artificial teeth in composite or acrylic material suitable for combined prosthesis on implants.

Moulds: available in 10 upper anterior and 4 lower anterior moulds. Posterior teeth are available in 18 different Technical, Anatomical and WFA moulds.

Shades: A1/D4

Code: T2031 (Anterior) / T2032 (Posterior).

LIGHT CURING COMPOSITES FOR FIXING / SHAPING

Major AF Comp Metal Primer

Conditioner specially formulated to provide excellent adhesion on all types of metal.

Content: 5 ml + 1 brush

Code: B6151

Major AF Comp Bonding

Light curing bonding for acrylic and composite materials.

Content: 7 ml

Code: B6153

Major AF Comp Paste Opaquer

Light curing opaque in paste, specially developed to be applied on the dentine areas.

Shades: OL / OM / OD

Content: 3 g

Codes: B6121-L / B6121-M / B6121-D

Major AF Comp Dual Cem

Self curing dual cement which provides excellent adhesion to all types of metal and composite fiber structures.

Shades: DC-L / DC-M / DC-D

Content: 8 g + 8 tips

Codes: B6141-L / B6141-M / B6141-D

Major AF Comp Bondopaquer

Light-curing opaque which includes a metal conditioner, designed to ensure optimum adhesion with materials of the structure in the gingival areas.

Shades: OC-PINK

Content: 3 g

Codes: B6152



MAJOR AF LINE COMPONENTS

LIGHT CURING COMPOSITES FOR AESTHETIC RESTORATIONS

Major AF Comp Dentine Flow

Light curing composite material with an optimal balance between opacity and translucency.

Shades: A1 / A2-B2 / A3 / A3,5 / A4 / B3-B4 / C2-C3 / D2-D3

Content: 3 g + 10 tips

Code: B6111-A1 / B6111-A2 / B6111-A3 / B6111-35 / B6111-A4 / B6111-B3 / B6111-C2 / B6111-D2

Major AF Comp Incisal Flow

Light curing composite material with fluid consistency for characterization of aesthetic restorations.

Shades: IF-CLEAR / IF-RED / IF-BLUE

Content: 3 g + 10 tips

Codes: B6131-C / B6131-R / B6131-B

Major AF Comp Gengive Paste

Light curing composite material in paste for aesthetic restorations of the gingival areas.

Shades: GP-PINK L / GP-PINK M / GP-PINK D

Content: 5 g

Codes: B6164-PL / B6164-PM / B6164-PD

Major AF Comp Gengive Flow

Light curing composite material with fluid consistency for aesthetic restorations of the gingival areas.

Shades: GF-PINK L / GF-PINK M / GF-PINK D

Content: 3 g + 10 tips

Code: B6164-FL / B6164-FM / B6164-FD

Major AF Comp Modelling

Modelling liquid for the MAJOR AF LINE composite materials.

Content: 5 ml

Code: B6154

ACRYLIC RESINS FOR FIXING

Major AF C&B-V - Powder D

Dentine in acrylic resin for filling of veneering teeth, granting excellent adhesion, resistance and durability.

Shades: A1/D4

Content: 100 g

Codes: B3111

ACRYLIC RESINS FOR AESTHETIC RESTORATIONS

Major AF C&B-V - Powder I

Enamel in acrylic resin for characterization of aesthetic restorations.

Shades: A1/D4

Content: 100 g

Codes: B3131



MAJOR Prodotti Dentari S.p.A.

via Einaudi 23, 10024 Moncalieri (TO) - ITALY
Tel. +39 011 6400211 - Fax +39 011 6402325
info@majordental.com - www.majordental.com

